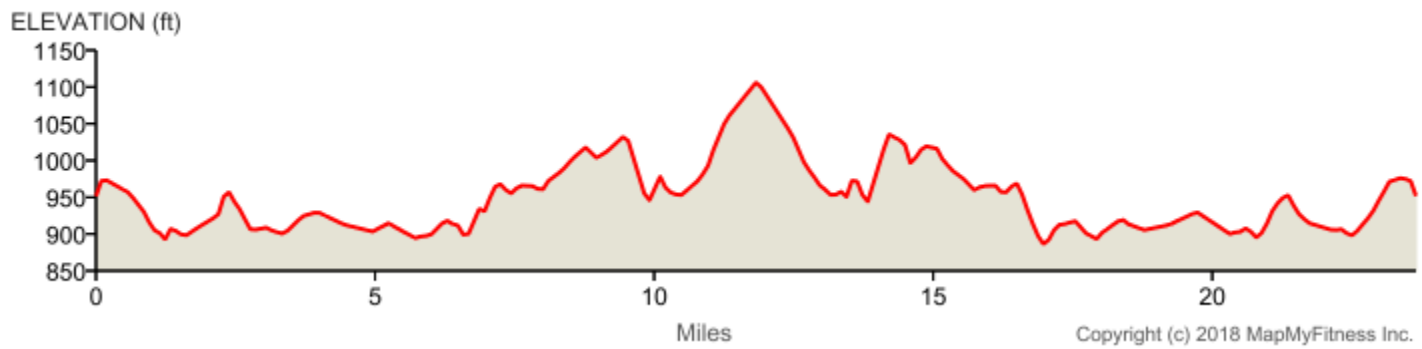
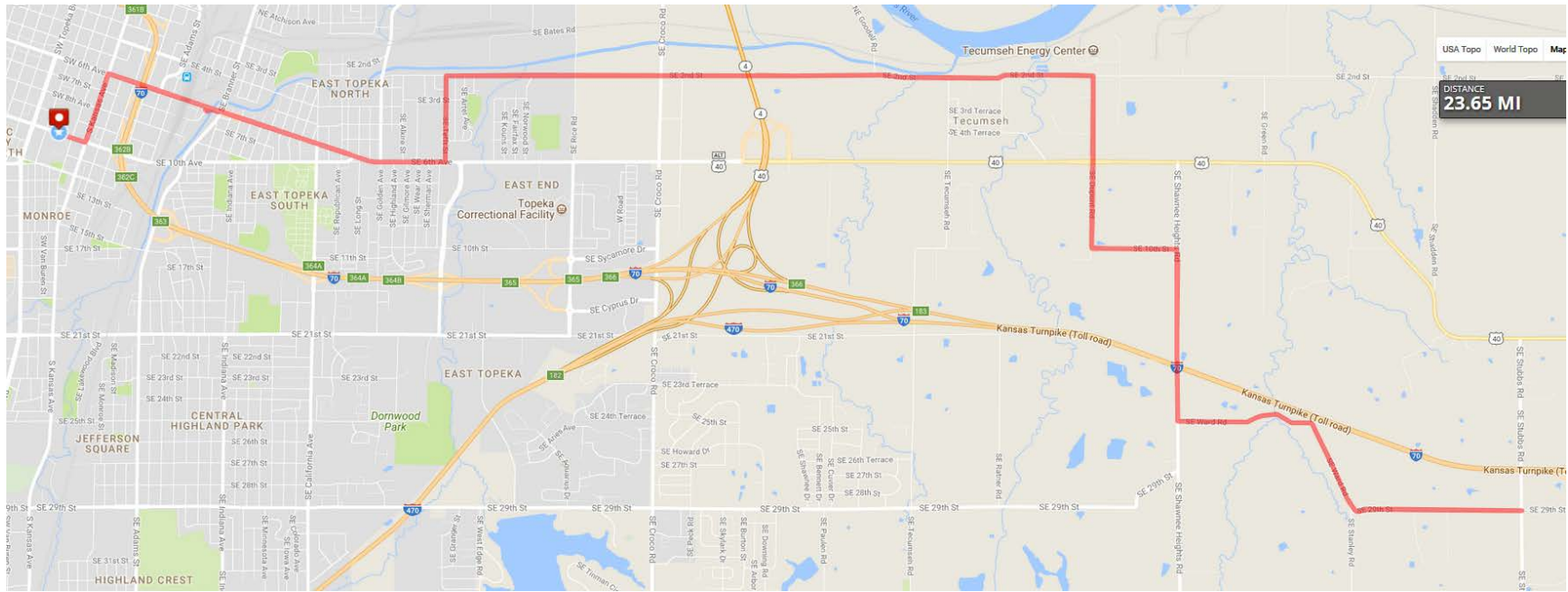


# Capitol Classic – Short Route



## **Short Route**

Take 10<sup>th</sup> street east to Kansas Ave. (turn left ) onto Kansas Ave.

Take Kansas Ave. to 6<sup>th</sup> St. ( turn Right ) onto 6<sup>th</sup> St.

Take 6<sup>th</sup> St. to Tefft St. ( turn Left ) onto Tefft St.

Take Tefft St. to 2<sup>nd</sup> St. (Turn Right ) onto 2<sup>nd</sup> St.

Take 2<sup>nd</sup> St. to Dupont Rd. ( turn Right ) onto Dupont Rd.

Take Dupont Rd. across Highway 40 to 10<sup>th</sup> St.( Turn Left ) onto 10<sup>th</sup> St.

Take 10<sup>th</sup> St to Shawnee Heights Rd. (Turn Right ) onto Shawnee Heights Rd.

Take Shawnee Heights Rd to Ward Rd . ( Turn Left ) onto Ward Rd.

Take Ward Rd. to 29<sup>th</sup> St. At this point there will be a Y in the Rd. ( Turn Left ) onto 29<sup>th</sup> St.

Your **Sag** will Be at 29<sup>th</sup> and Stubbs Rd.

### **To return home just reverse the direction**

Head West on 29<sup>th</sup> to Ward Rd. ( Turn Right ) onto ward Rd.

Ward Rd to Shawnee heights Rd ( Turn Right ) onto Shawnee Heights Rd.

Shawnee Heights Rd. to 10<sup>th</sup> St. ( Turn Left ) onto 10<sup>th</sup> St.

10<sup>th</sup> St. to Dupont Rd. (Turn Right ) onto Dupont Rd.

Dupont Rd. To 2<sup>nd</sup> St. ( Turn Left ) on 2<sup>nd</sup> St.

2nd St. To Tefft St. ( Turn Left ) onto Tefft St.

Tefft St. To 6<sup>th</sup> St. ( Turn Right ) onto 6<sup>th</sup> St.

6<sup>th</sup> St. To Kansas Ave ( Turn Left ) onto Kansas Ave.

Kansas Ave. to 10<sup>th</sup> St. ( Turn Right ) onto 10<sup>th</sup> St.

Take 10<sup>th</sup> St. West to the Judicial Center on your Left.

Contact: Angie Shelton 785-806-9656

Steve Curtis 785 408 9356